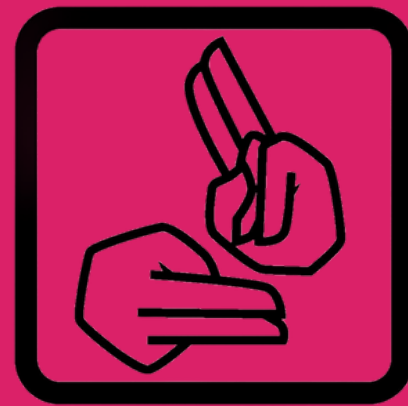




AUTIN
DANCE THEATRE



EASY READ GUIDE

ABOUT

US



WOW! Fest – A Celebration of Outdoor Dance & Performance

WOW! Fest (Walsall Outdoor Wonders Festival) is an exciting new **outdoor arts festival** celebrating the best **dance and movement**-based performances created in the Midlands.

Taking place on **Friday 18th and Saturday 19th July 2025** at **Walsall's Arboretum Park**, this vibrant two-day event will bring together artists, communities, and audiences of all ages for a weekend of inspiring, high-quality performances in the open air.



Autin Dance Theatre is an award-winning, innovative dance company and registered charity based in Birmingham, UK, under the artistic direction of acclaimed choreographer Johnny Autin.

@wowfest25

PERFORMANCE

INFORMATION



WOW! Fest will take place on
**Friday 18th July 12PM to 3:30PM and
3:30PM to 7PM**
and
**Saturday 19th July 11AM to 2:30PM and
2:30PM to 6PM**



You will need to book a ticket online for
ONE or BOTH time slots.

Tickets are **FREE!**

Click **HERE** to reserve a ticket!



You can find the fun at
**Walsall Arboretum – Event Annex,
The Crescent, Walsall, WS12DD**

@wowfest25

PERFORMANCE INFORMATION



FREE audience parking is available at the
Broadway North Car Park, WS1 2QB,
directly **opposite The Hawbush Centre.**

What3Words: ///town.valid.mole.



If you require a **Blue Badge** parking space,
please contact us in advance at
hello@autindt.co.uk so we can
accommodate your needs

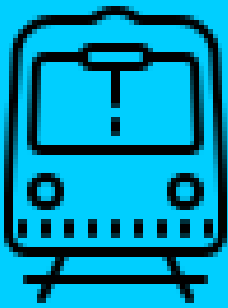


Nearest Bus Stops are:

- Willows Road (5-min walk)
674, 77, 77A, 705, 788, 936, 22
- Broadway North (7-min walk)
- The Crescent (9-min walk)
- Lumley Road (10-min)

PERFORMANCE

INFORMATION



Nearest Train Station:

Walsall Railway Station (15 min walk) on the West Midlands Railway line between Birmingham New Street and Wolverhampton



On both days, we will have **2 x BSL Interpreters.**

Friday: Olivia Whitter & Elizabeth Smith
Saturday: Ryan Ball & Elizabeth Smith



We encourage all attendees to **bring refillable water bottles** on the day, something to sit on, and come **prepared for the weather**

Some merch and food/drink will be available to buy, but feel free to **bring picnics and snacks**

@wowfest25

PERFORMANCE

INFORMATION



As the event is taking place **outside**, you can expect a **busy but fun atmosphere**.

You can **enter and exit** as many times as needed.



The event will be **quite loud** with music playing throughout for each performance and workshop



WOW! Fest will be **photographed and recorded** for marketing, monitoring, and evaluation purposes

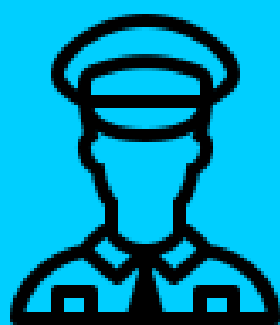
If you or your children do not wish to be included in any recordings, **please inform a member of our staff**

PERFORMANCE

INFORMATION



If you need **any help**, or have any questions, you can ask a member of staff in a **white t-shirt or high-vis vest**.



To help keep the **space safe**, we will have **security** around the festival site.



Please note: this festival is **alcohol/drug free** and **glass free**!

FESTIVAL

MAP



KEY:

- 1 Up in the Sky
- 2 Next Gen
- 3 Linden
- 4 Ascension
- Tech Tent
- Food Vendor
- Quiet Space
- Information/Lost Child Point
- Performers Registration
- External Stall Holders
- Marquees /Next Gen bag drop
- First Aid
- Portable Toilets
- Water Station

